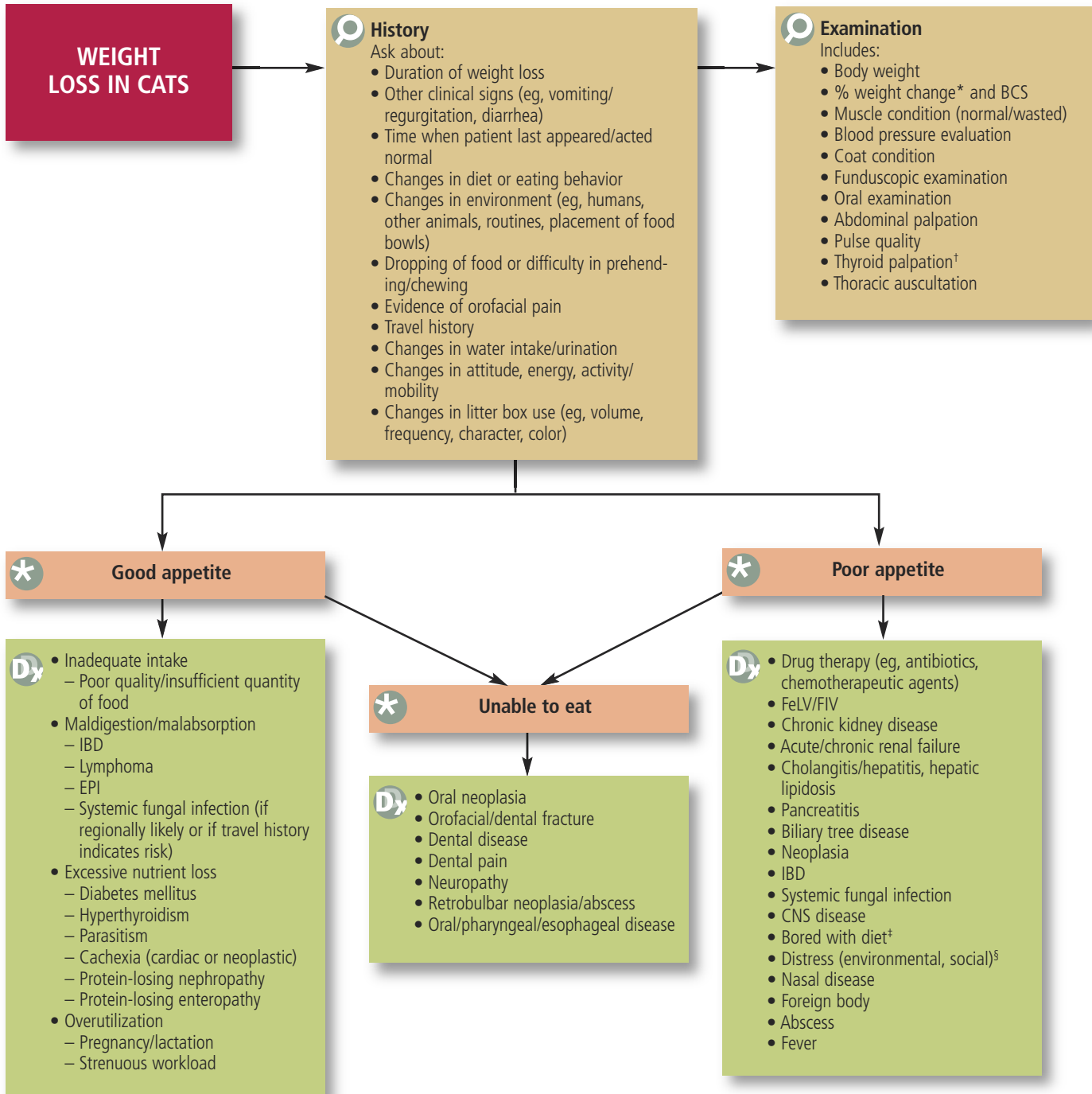


Feline Weight Loss

Margie Scherk, DVM, Diplomate ABVP (Feline Practice)
catsINK, Vancouver, British Columbia



* Percentage of weight change = (previous weight – today’s weight)/previous weight × 100

† Presence/absence of mass does not rule in/out hyperthyroidism

‡ Offer a variety of diets; recheck weight in 10–14 days: if no weight gain, perform MDB; if weight gain, continue with new diet/recheck weight in 14 days

§ If history reveals stress: enrich environment with opportunities to hide and perch, move feeding station to quiet and safe place, add feeding stations (easy access, etc)

BCS = body condition score, CBC = complete blood count, CNS = central nervous system, EPI = exocrine pancreatic insufficiency, FeLV = feline leukemia virus, FIV = feline immunodeficiency virus, fPLI = feline pancreatic lipase immunoreactivity, fTLI = feline trypsinogen-like immunoreactivity, GI = gastrointestinal, IBD = inflammatory bowel disease, MDB = minimum database, T₄ = thyroxine, UP/C = urine protein:creatinine ratio

