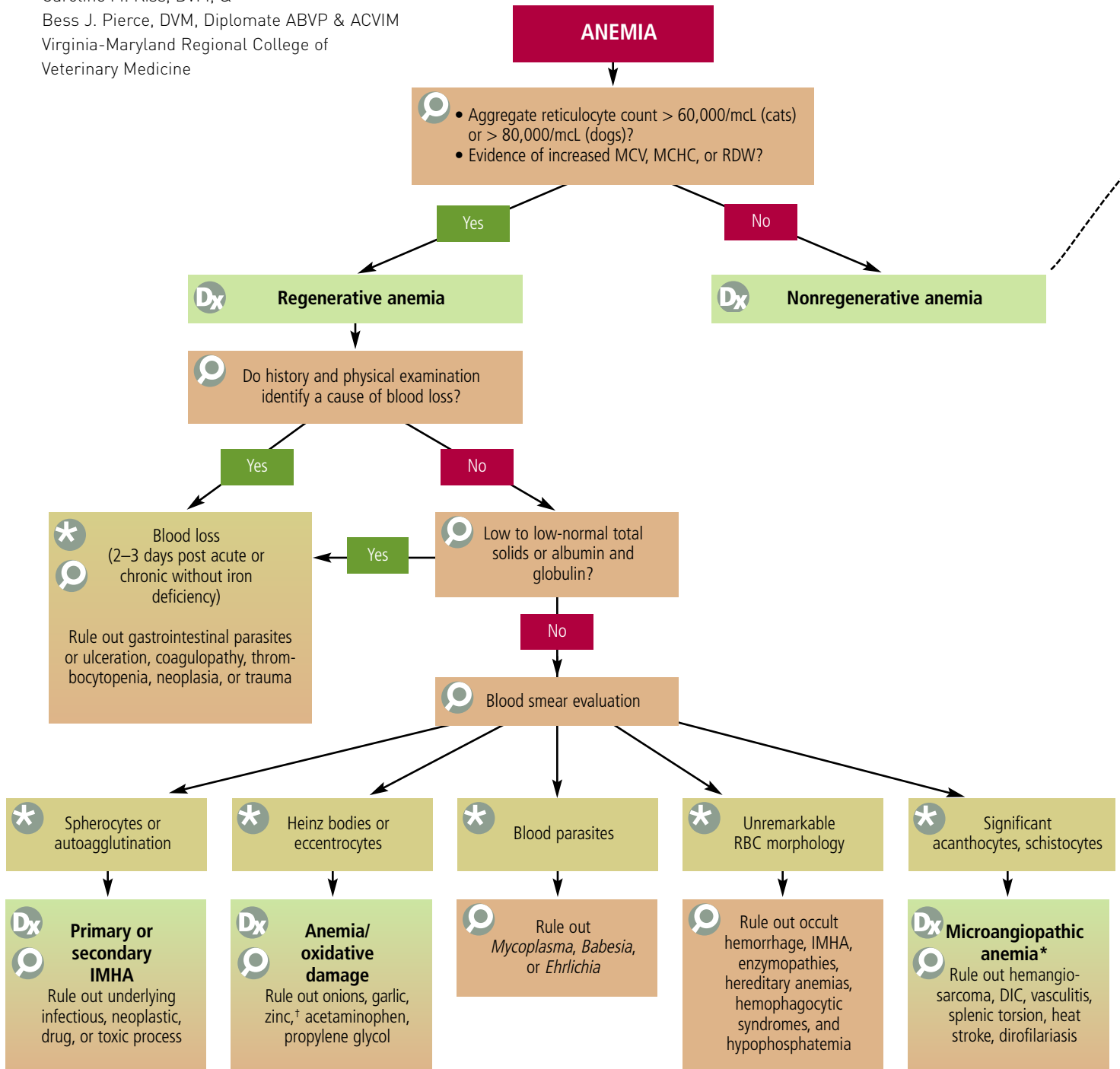


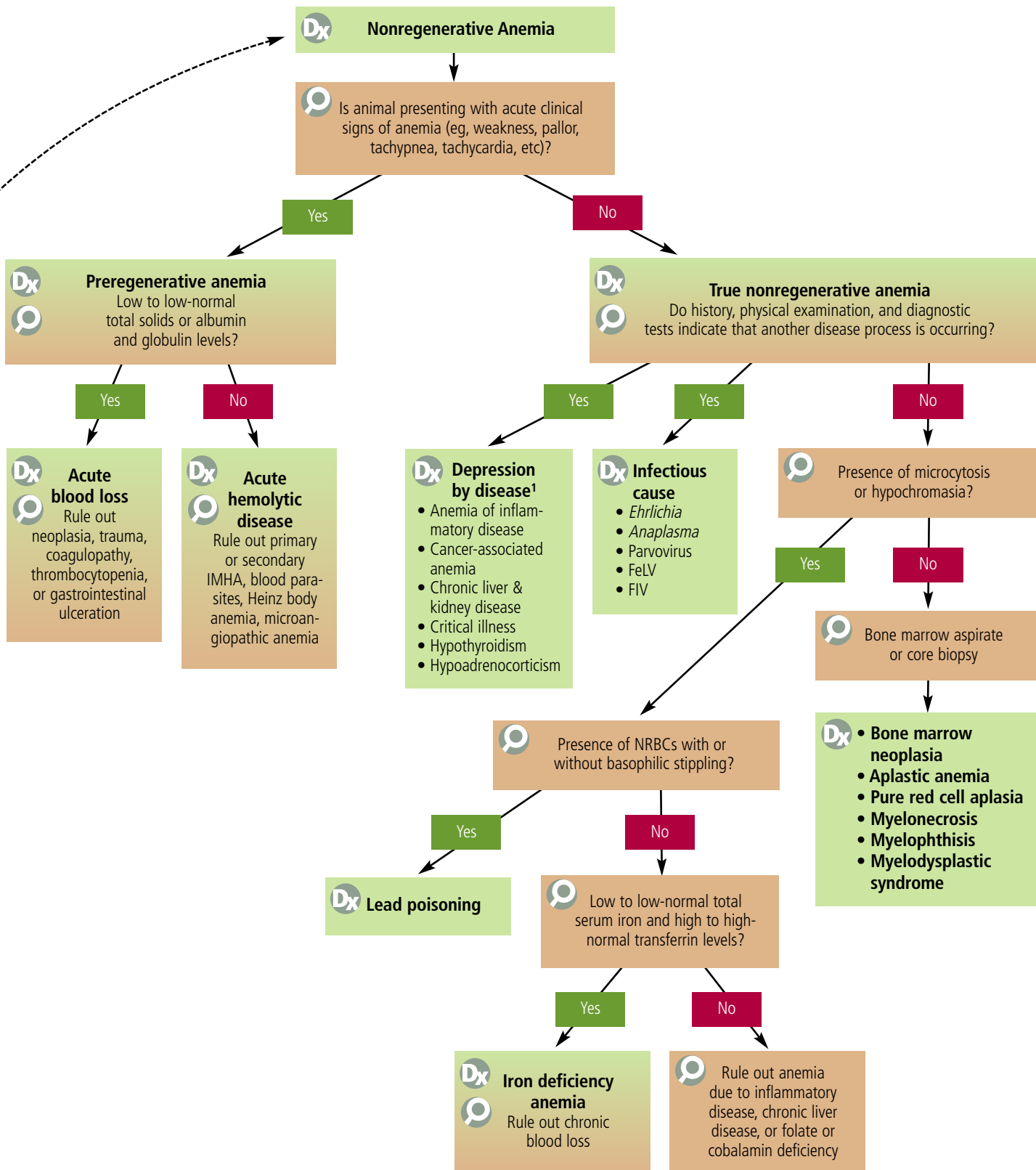
Anemia

Caroline M. Kiss, DVM, &
 Bess J. Pierce, DVM, Diplomate ABVP & ACVIM
 Virginia-Maryland Regional College of
 Veterinary Medicine



DIC = disseminated intravascular coagulation; FeLV = feline leukemia virus; FIV = feline immunodeficiency virus; IMHA = immune-mediated hemolytic anemia; MCHC = mean corpuscular hemoglobin concentration; MCV = mean cell volume; NRBC = nucleated red blood cell; RBC = red blood cell; RDW = red cell distribution width

* Microangiopathic anemia occasionally presents as nonregenerative anemia
 † Spherocyte-like RBC morphology may be noted in zinc toxicity; however, Heinz bodies are usually more prevalent



Dx Diagnosis
 🔍 Investigation
 ✱ Result

See Aids & Resources, back page, for references and suggested reading.